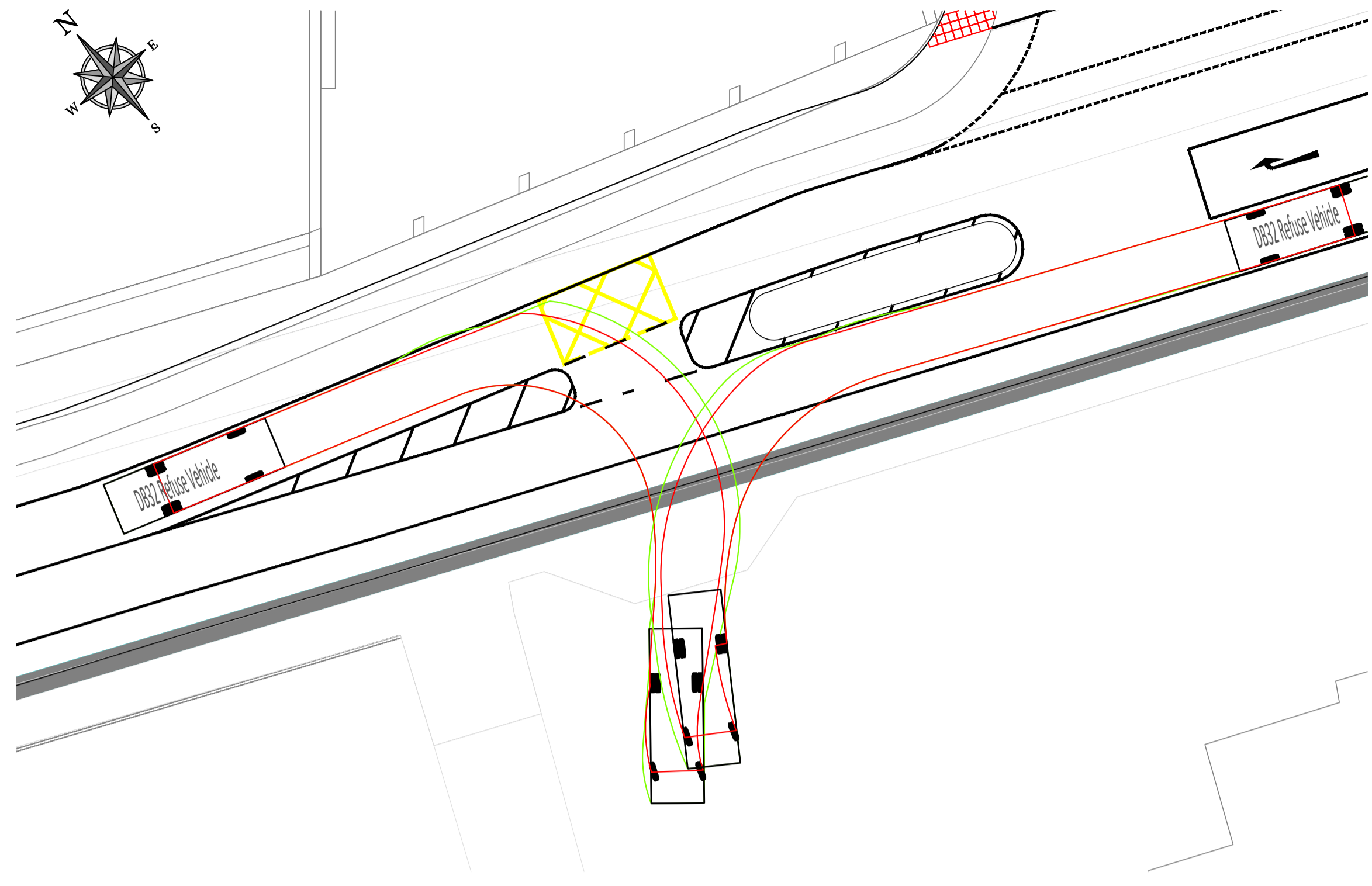
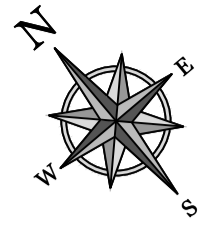
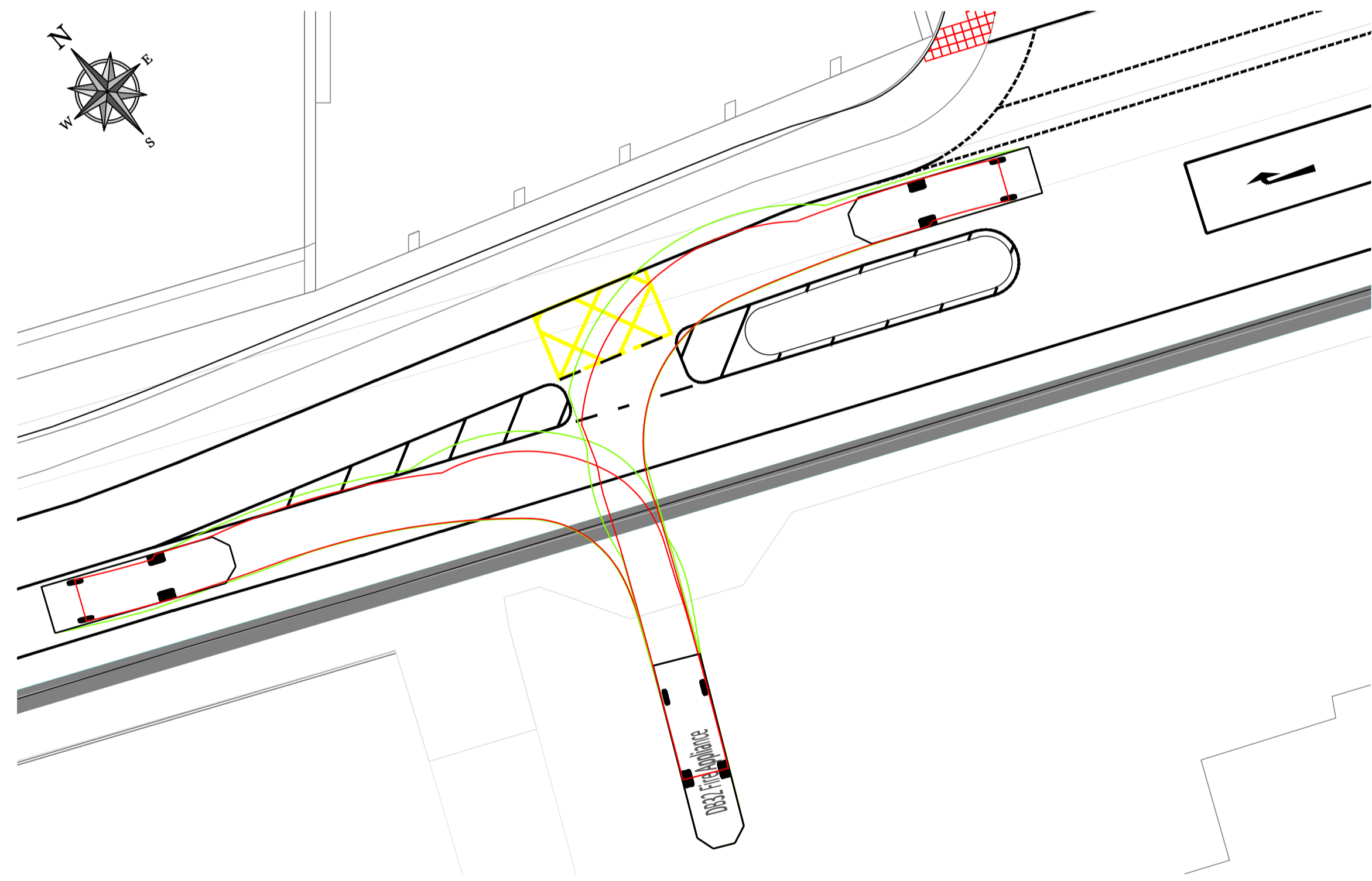


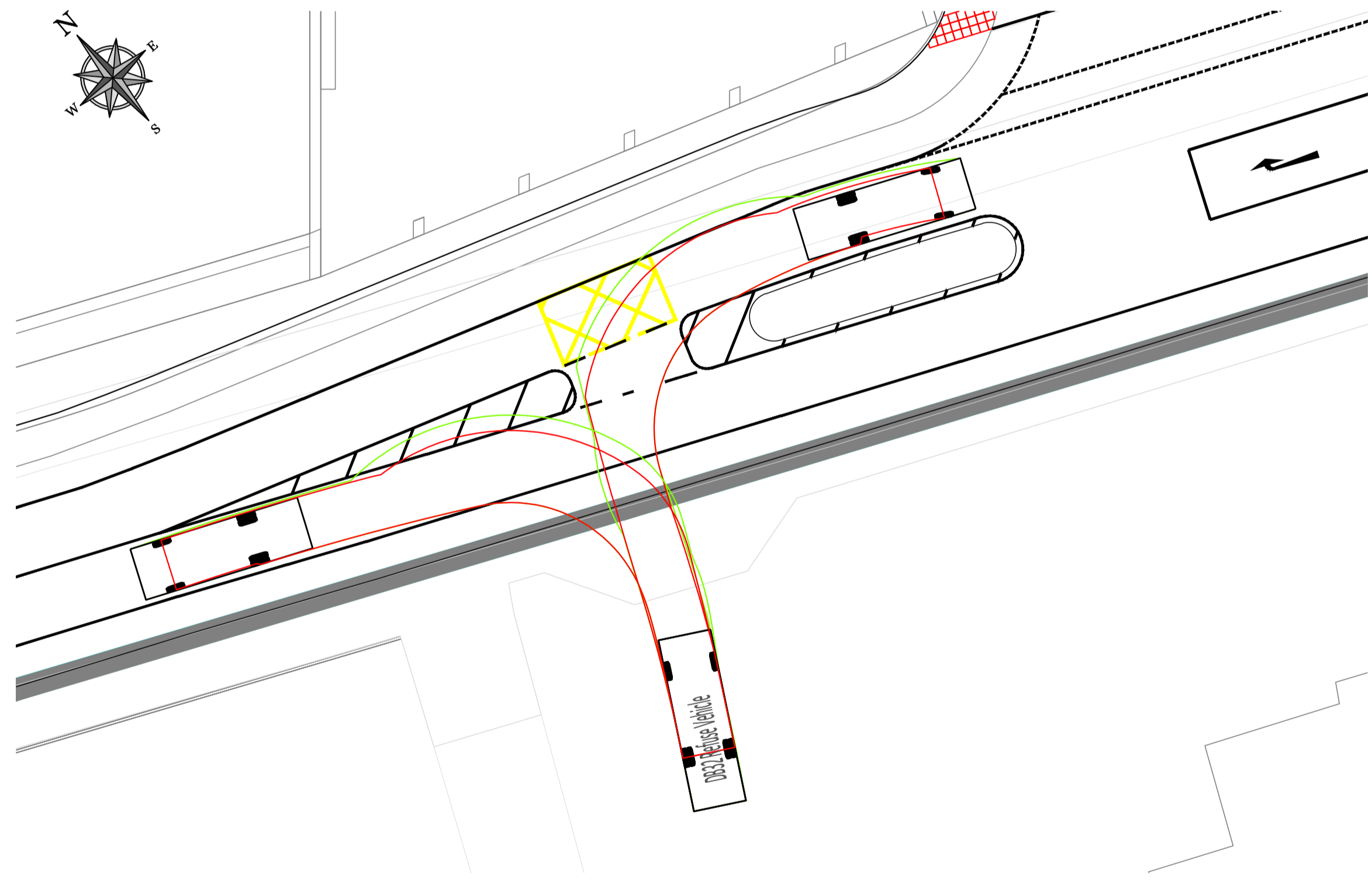
FIRE TENDER ENTERING TUS NUA RESOURCE CENTRE SITE  
(SCALE 1:200)



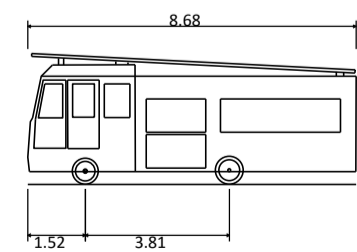
REFUSE VEHICLE ENTERING TUS NUA RESOURCE CENTRE SITE  
(SCALE 1:200)



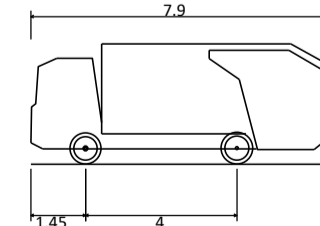
FIRE TENDER EXITING TUS NUA RESOURCE CENTRE SITE  
(SCALE 1:200)



REFUSE VEHICLE EXITING TUS NUA RESOURCE CENTRE SITE  
(SCALE 1:200)



DB32 Fire Appliance  
Overall Length 8.680m  
Overall Width 2.180m  
Overall Body Height 3.452m  
Min Body Ground Clearance 0.357m  
Max Track Width 2.121m  
Lock-to-lock time 6.00s  
Curb to Curb Turning Radius 7.910m



DB32 Refuse Vehicle  
Overall Length 7.900m  
Overall Width 2.400m  
Overall Body Height 3.183m  
Min Body Ground Clearance 0.388m  
Max Track Width 2.400m  
Lock-to-lock time 6.00s  
Curb to Curb Turning Radius 9.625m

COPYRIGHT AND OWNERSHIP OF THIS DRAWING IS RESERVED TO GARLAND.  
WHOSE PRIOR WRITTEN CONSENT IS REQUIRED FOR ITS REPRODUCTION AND PUBLICATION TO ANY THIRD PARTY.  
ALL RIGHTS RESERVED BY THE LAW OF COPYRIGHT AND BY INTERNATIONAL COPYRIGHT CONVENTIONS ARE RESERVED TO GARLAND.  
NO PART OF THIS DOCUMENT MAY BE REPRODUCED OR TRANSMITTED IN ANY FORM OR STORED IN ANY RETRIEVAL SYSTEM OF ANY NATURE WITHOUT THE WRITTEN PERMISSION OF THE CONSULTING ENGINEER AS COPYRIGHT HOLDER EXCEPT AS AGREED FOR USE ON THE PROJECT FOR WHICH THE DOCUMENT WAS ORIGINALLY ISSUED.  
QUALITY  
I.S. EN ISO 9001:2008  
NSAI Certified

- NOTES**
1. THIS DRAWING IS TO BE READ IN CONJUNCTION WITH THE SPECIFICATIONS AND ALL RELEVANT ARCHITECTS AND SERVICES ENGINEERS DRAWINGS.
  2. DO NOT SCALE. USE FIGURED DIMENSIONS ONLY.
  3. ALL LEVELS TO BE CHECKED ON SITE BY THE CONTRACTOR AND ANY DISCREPANCIES (DIMENSIONS) SHALL BE REPORTED TO THE ENGINEER PRIOR TO CONSTRUCTION.

**LEGEND**  
VEHICLE WHEEL TRACKING ———  
VEHICLE BODY TRACKING ———

REV	DATE	DESCRIPTION	DWG BY	APP/CHK

CLIENT:  
BALLYMOUNT PROPERTIES LTD.

ARCHITECT:  
RKD ARCHITECTS

**GARLAND**  
DUBLIN LIMERICK WATERFORD INTERNATIONAL  
T: +353 1 4964322 T: +353 61 319708 T: +353 61 876511 T: +353 61 319708  
E: info@garlandconsultancy.com W: www.garlandconsultancy.com

PROJECT:  
RESIDENTIAL AND NEIGHBOURHOOD CENTRE DEVELOPMENT (PHASE 1)

TITLE:  
HOSPITAL STREET TUS NUA RESOURCE CENTRE VEHICLE TRACKING

STATUS:  
**PLANNING APPLICATION**

DRAWN: JC DES. BY: CR  
CHK. BY: CR APP. BY: CR

DATE: 26/06/19 JOB No. R1831

A1 SCALE: 1:200 DRG. No. 1025 REV. 1st